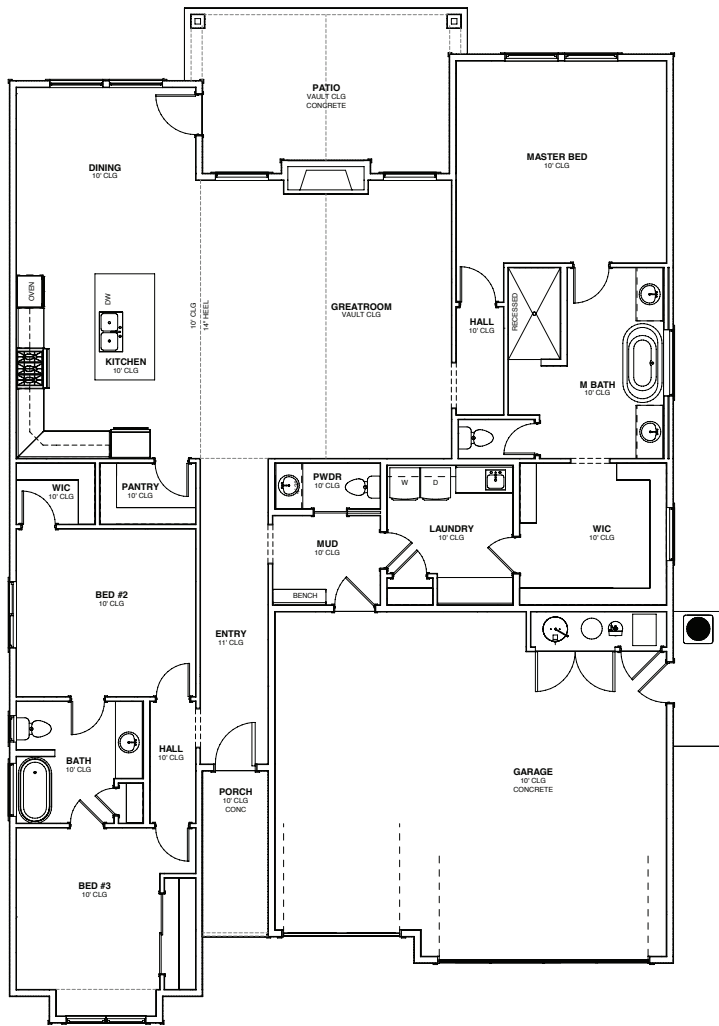


R. PEDERSEN

# THE TRAVIS JORDAN



- 2,412 Sq. Ft.
- 3 Bedrooms
- 2 ½ Bathrooms
- Large Gathering Room
- Covered Patio
- 3 Car Garage



To view floor plans and a gallery showing of our work, visit...  
[www.JamesClydeHomes.com](http://www.JamesClydeHomes.com)

# JAMES CLYDE Homes



\*Floorplans are a representation of the homes and may vary significantly based on elevation and selected options and may change without notice. Optional features may be included at additional cost subject to construction cut off dates. Buyer to verify all. RCE-689